

Science • Animals including Humans



Crucial Knowledge

- Animals vary in many ways having different structures e.g. wings, tails, ears etc.
- They also have different skin coverings e.g. scales, feathers, hair.
- These key features can be used to identify them.
- Animals eat certain things - some eat other animals, some eat plants, some eat both plants and animals.
- Humans have keys parts in common, but these vary from person to person.
- Humans (and other animals) find out about the world using their senses.
- Humans have five senses – sight, touch, taste, hearing and smelling. These senses are linked to particular parts of the body.



Key Vocabulary

tail



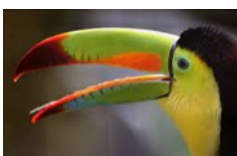
fur



wings



beak



claw



Paws



fin



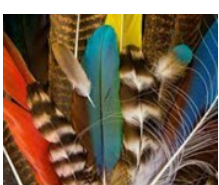
hooves



scales



feathers



sight

hearing

touch

taste

smell

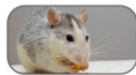


Diagrams / Images

Mammals



human



mouse



dog



cow

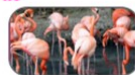
Birds



penguin



chicken



flamingo



robin

Fish



goldfish



tuna



shark



eel

Reptiles



snake



tortoise



lizard



alligator

Amphibians



frog



toad



newt



salamander



Important People



Lucy Cooke is a British zoologist, author, television producer, director, and presenter.

Latika Nath is an Indian author, photographer and wildlife conservationist.



We Are Building Our Knowledge From

- Creatures and Under The Sea (YR)

This will help when we learn about

- Living Things and Their Habitats (Y2)